

# The New **FX** Welding Impeder System

The New **FX** Welding Impeder System  
is a complete solution for HF tube mills.  
It consists of 3 main parts:

- Hanging unit
- Tow-Bar
- Impeder

The hanging unit is holding the towbar by its blade.  
The blade and towbar are fix as one piece. The towbar is  
manufactured at a length suitable for your mill.

At the backside there is a coupling for cooling fluid entry.  
There are also towbars with a fluid-supply-type blade where  
the water couplings are on an adapter placed on top of the blade.  
This adapter is shown on the right.

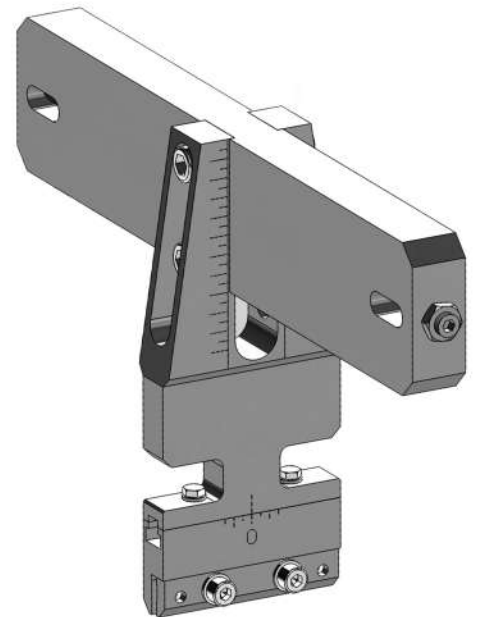


## Are you still building your impeders?

The Highly efficient Saar Hartmetall SIM Welding  
Impeders are a practical 'screw-on' solution



Standard impeders have a ferrite length of 200mm.  
Longer Impeders are available on request.  
They are supplied as 5-Piece-Sets. Each set includes  
an adapter to mount the impeders to the tow bar.



The hanging unit is adjustable in the X- direction  
(forward-back: +/- 15mm) and Y-direction  
(height: 51mm )

## Advantages:

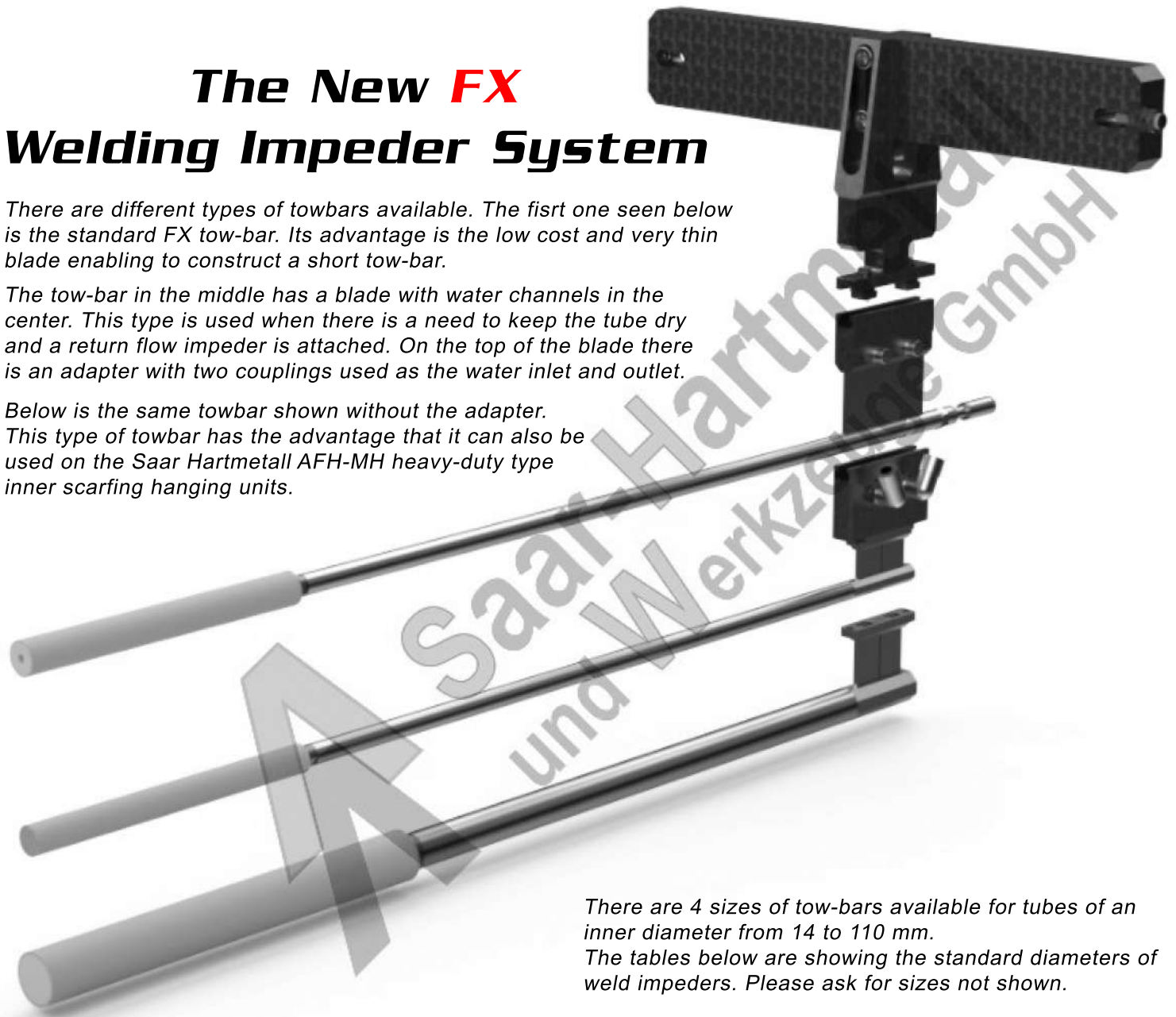
- Easy to use
- Highly efficient: Saves energy, improves quality
- Time and money saving: Concentrate on tube  
production rather than impeder building!
- Adaptable to almost any tube mill

# The New **FX** Welding Impeder System

There are different types of towbars available. The first one seen below is the standard FX tow-bar. Its advantage is the low cost and very thin blade enabling to construct a short tow-bar.

The tow-bar in the middle has a blade with water channels in the center. This type is used when there is a need to keep the tube dry and a return flow impeder is attached. On the top of the blade there is an adapter with two couplings used as the water inlet and outlet.

Below is the same towbar shown without the adapter. This type of towbar has the advantage that it can also be used on the Saar Hartmetall AFH-MH heavy-duty type inner scarfing hanging units.



There are 4 sizes of tow-bars available for tubes of an inner diameter from 14 to 110 mm. The tables below are showing the standard diameters of weld impeders. Please ask for sizes not shown.

FLOW - THROUGH IMPEDERS and TOW-BARS		
IMPEDER MODEL	Tube-ID-Ø-range (mm):	Suitable tow bar:
SIM-WD 12	14,00 - 16,00	GST-SIM 12/14 WD / ...FX
SIM-WD 14	16,00 - 18,00	
SIM-WD 16	18,00 - 21,00	
SIM-WD 18	21,00 - 23,00	GST-SIM 16/25 WD / ...FX
SIM-WD 20	23,00 - 25,00	
SIM-WD 22	25,00 - 29,00	
SIM-WD 25	29,00 - 32,00	
SIM-WD 28	32,00 - 38,00	GST-SIM 28/55 WD / ...FX
SIM-WD 34	38,00 - 44,00	
SIM-WD 39	44,00 - 55,00	
SIM-WD 45	54,00 - 65,00	
SIM-WD 55	64,00 - 75,00	
SIM-WD 70	85,00 - 100,00	
SIM-WD 85	99,00 - 110,00	GST-SIM 70/85 WD / ...FX

RETURN - FLOW IMPEDERS and TOW-BARS		
IMPEDER MODEL	Tube-ID-Ø-range (mm):	Suitable tow bar:
SIM-WR 14	16,00 - 18,00	GST-SIM 14/14 WR
SIM-WR 16	18,00 - 21,00	GST-SIM 16/25 WR
SIM-WR 18	21,00 - 23,00	
SIM-WR 20	23,00 - 25,00	
SIM-WR 22	25,00 - 29,00	
SIM-WR 25	29,00 - 32,00	GST-SIM 28/55 WR
SIM-WR 28	32,00 - 38,00	
SIM-WR 34	38,00 - 44,00	
SIM-WR 39	44,00 - 55,00	
SIM-WR 45	54,00 - 65,00	
SIM-WR 55	64,00 - 75,00	

**Do you need more Information?  
Call us! We will be glad to help you.**



**Your regional  
representative:**



UTING ELEKTRONIK ve  
Endüstriyel Ü. M. D.Tic. San. Ltd. Sti.  
Address:

Cobancesme Mah., Gencosman Sok. Nr. 10  
34196 Bahcelievler - ISTANBUL / TURKEY

Phone: +90 212 6392095 [www.utingelektronik.com](http://www.utingelektronik.com)  
E-mail: [mail@utingelektronik.com](mailto:mail@utingelektronik.com)